



Software

DEMCO AUTOMATION www.demcowedge.com

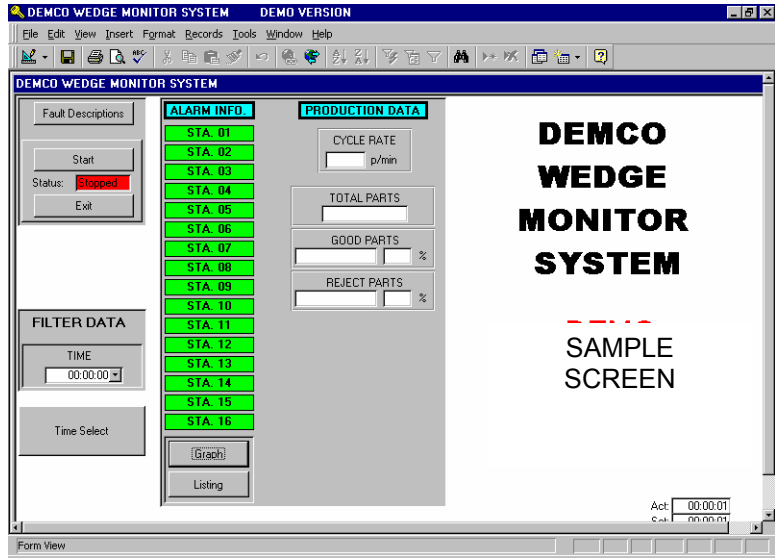
WEDGE MONITOR **PRODUCTION MONITORING SOFTWARE**

WEDGE MONITOR BENEFITS

- Gives detailed recording of production and downtime data.
- Data stored in ACCESS database for easy archiving and creation of custom reports.
- Integrates with **DEMCO SUPERWEDGE** software, sharing the same alarm database.

STANDARD FEATURES

- **DOWNTIME TRACKING** Gives you detailed down time recording. Allows you to concentrate on what issues are destroying your production.
- **TIME FILTERING** Allows setting of time filter for report generation. See how your production did last shift, day, week, month or year!!
- **PRODUCTION TRACKING** Keeps detailed production data including good/bad parts, cycle rates, yields, etc.
- **FLEXIBLE DATA** All data is stored in Microsoft ACCESS format. This allows anyone to create custom graphs and or reports.



DESCRIPTION

WEDGE MONITOR was developed to deliver a complete automation cell solution. The software logs detailed production and alarm data. This information is available for use by production, quality, and planning personnel.

The downtime portion of the software records data to a station alarm level. This gives maintenance personnel instant feedback as to what issues they need to address.

The production data records information that can be used for planning and scheduling purposes.

TRAINING CLASSES AVAILABLE

PLEASE CONTACT DEMCO FOR INFORMATION AND SCHEDULES

HOW TO ORDER

WM-0201.01

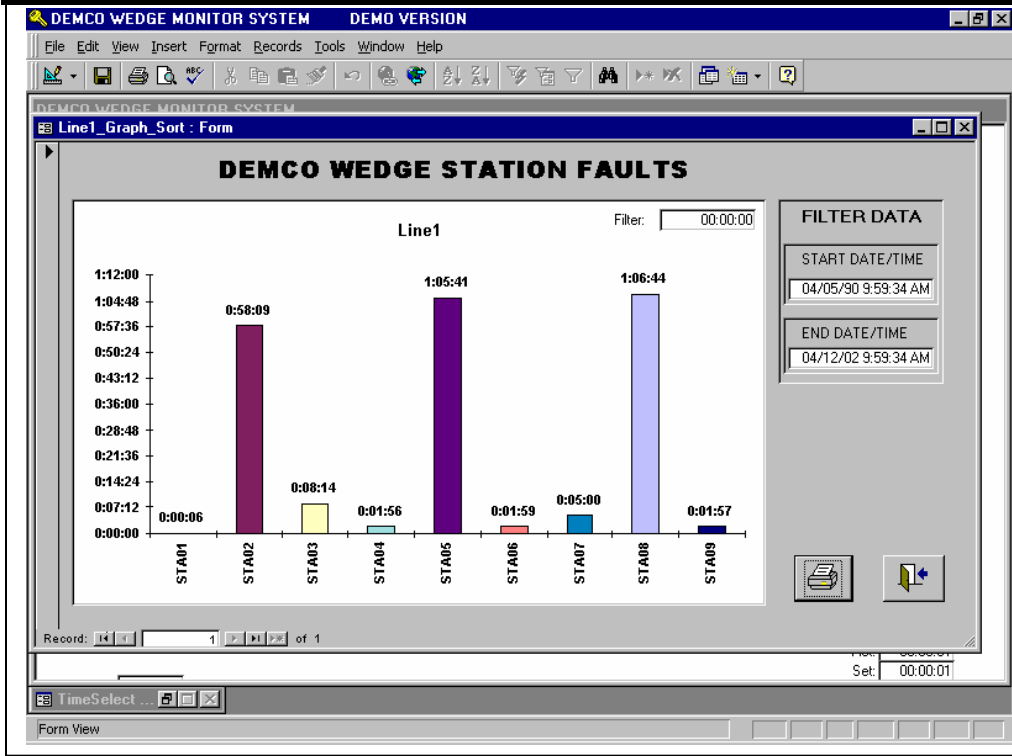
Delivered with software on CD, manual , and 10 foot communication cable



CALL TOLL FREE 1-888-41-WEDGE



WEDGE MONITOR PRODUCTION MONITORING SOFTWARE



SHOW DETAILED DOWNTIME HISTORY BY STATION FOR A PERIOD OF TIME THAT YOU SELECT!

Line	Fault_Description	Fault_Location	Time Fault Start	Downtime
1	Auxiliary Response Fault	STA05	04/08/2002 2:54:21 PM	0:00:53
1	Auxiliary Response Fault	STA05	04/08/2002 1:46:55 PM	0:00:33
1	Auxiliary Response Fault	STA05	04/08/2002 1:11:39 PM	0:00:39
1	Reject Part Not Seen	STA05	03/15/2002 10:36:02 AM	0:01:34
1	Down Fault	STA05	04/28/2000 1:32:03 PM	0:00:40
1	Extend Watch Dog	STA05	04/28/2000 1:31:19 PM	0:00:29
1	Extend Watch Dog	STA05	04/28/2000 1:30:50 PM	0:00:07
1	Extend Watch Dog	STA05	04/28/2000 1:27:01 PM	0:00:44
1	Up Fault	STA05	04/28/2000 1:23:16 PM	0:00:14
1	Extend Watch Dog	STA05	04/28/2000 8:56:56 AM	0:54:44
1	Down Fault	STA05	04/28/2000 8:55:24 AM	0:01:20
1	Extend Watch Dog	STA05	04/28/2000 8:55:24 AM	0:01:20

ALL DATA AVAILABLE IN MICROSOFT ACCESS FOR CUSTOM REPORTS